

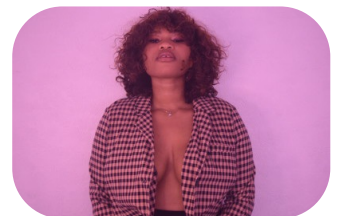
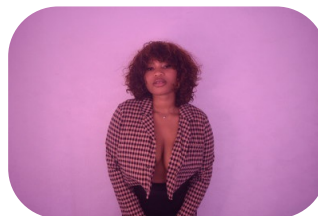


# Precious Edo Joseph



Age: 25-30	Height: 5ft9inch	Eye Colour: Brown	Accent: London
Gender:F	Weight: 85kg	Waist: 42	Bust: 42
Location: London	Shoe Size: 8.UK	Hips: 44	
Drives: Yes	Hair Color: Brunette		

Talents  
COMMERCIAL MODELS, EXTRAS



Additional Talents:  
SWIM - ROLLERSKATE  
DANCE - AFROBEATZ - 10 + YEARS

---

FOR ANY INQUIRIES PLEASE CONTACT US

0207 834 66 60 - Office

[www.fusionmng.com](http://www.fusionmng.com)

[cast@fusionmng.com](mailto:cast@fusionmng.com)

**FM** FUSION  
MANAGEMENT  
TALENT & MODEL MANAGEMENT AGENCY